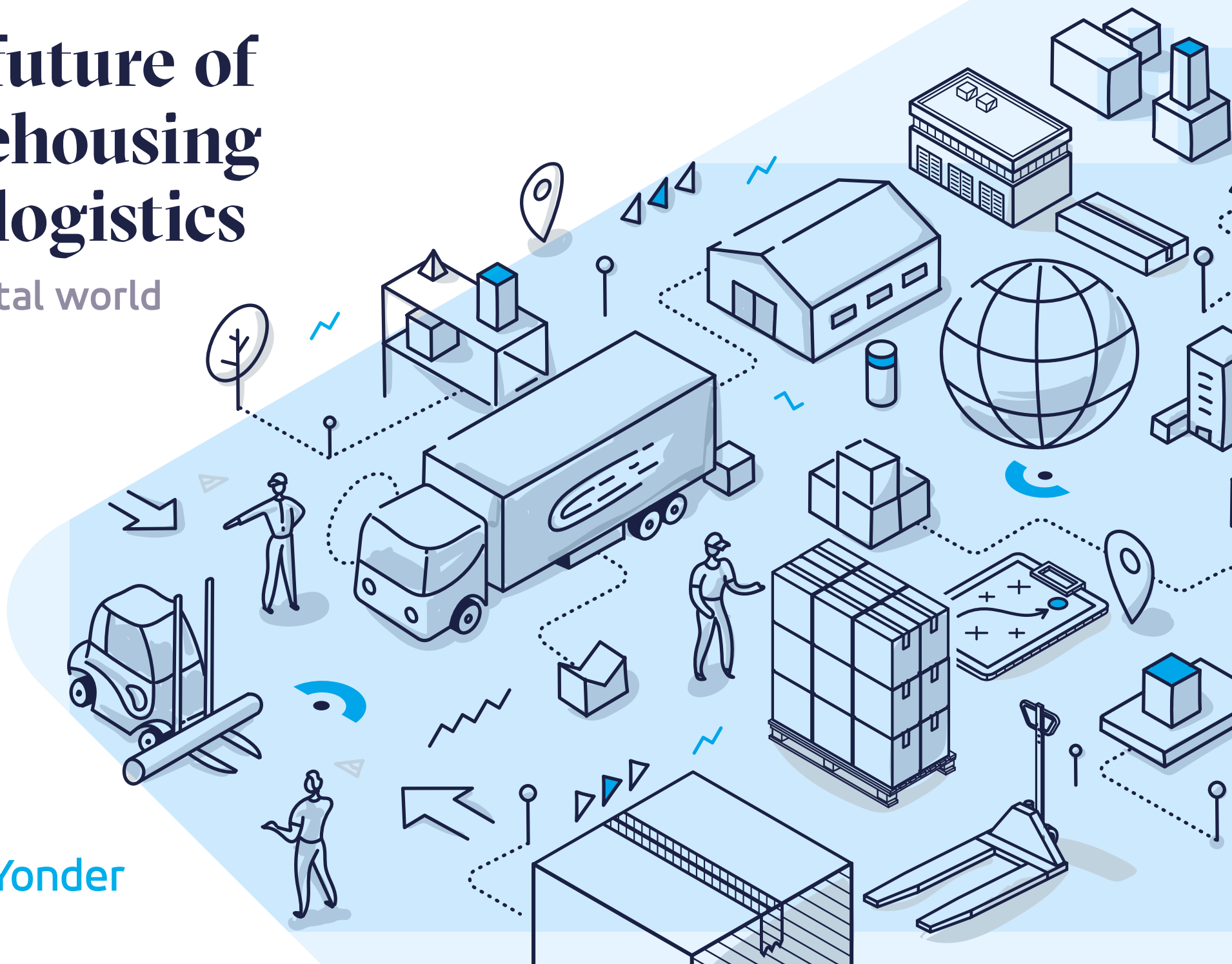


The future of warehousing and logistics

in a digital world



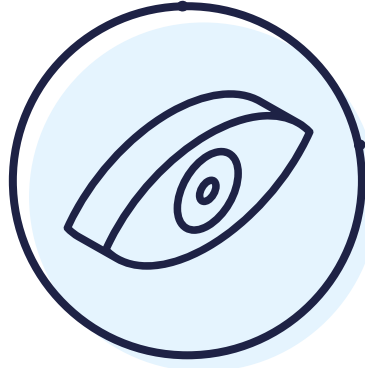
The warehousing challenge



Digital: How do you do more... for less

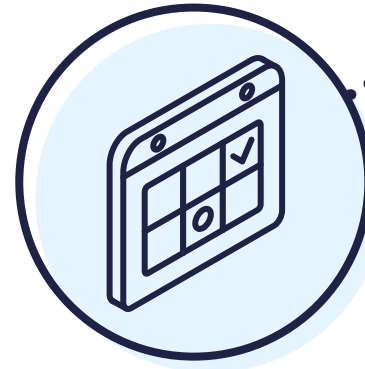
The digital revolution fundamentally challenges supply chains designed for a simpler, linear age. Clients and customers demand complex fulfilment, higher service levels, and shorter timescales. Meanwhile, the business is launching more products and promotions in response to greater market volatility.

The limitations of traditional supply chain execution and logistics processes are being forced to the surface as inefficiencies related to inventory, cost and control are exposed. It is not possible to keep driving faster and stay in control in the existing paradigm.



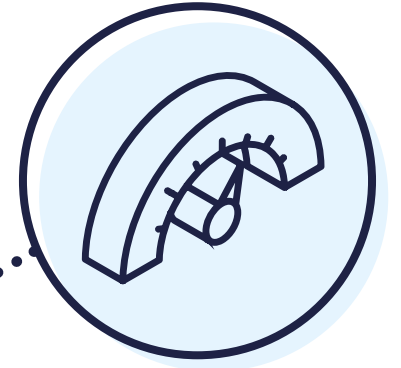
Supply Chain Visibility

How is it possible to navigate safely and efficiently without real-time visibility and orchestration of inventory, resources, processes, and tasks? Today's supply chains are global, multi-modal, resilient, and collaborative across multiple parties varying from shippers, 3PLs distributors, and retailers.



Integrated Logistics Planning and Execution

Service levels and profitability are end-to-end measures. Logistics planning and execution have to work hand-in-glove, ideally with end-to-end visibility, synchronisation and control.



Optimised Execution

Customer service is determined by the ability to deliver, despite issues. Therefore, logistics and warehouse execution that can seamlessly orchestrate and optimise resources (humans, robots, and assets), space and inventory will be key to exceed customer expectations, increase profits and handle disruptions with ease.



The road ahead

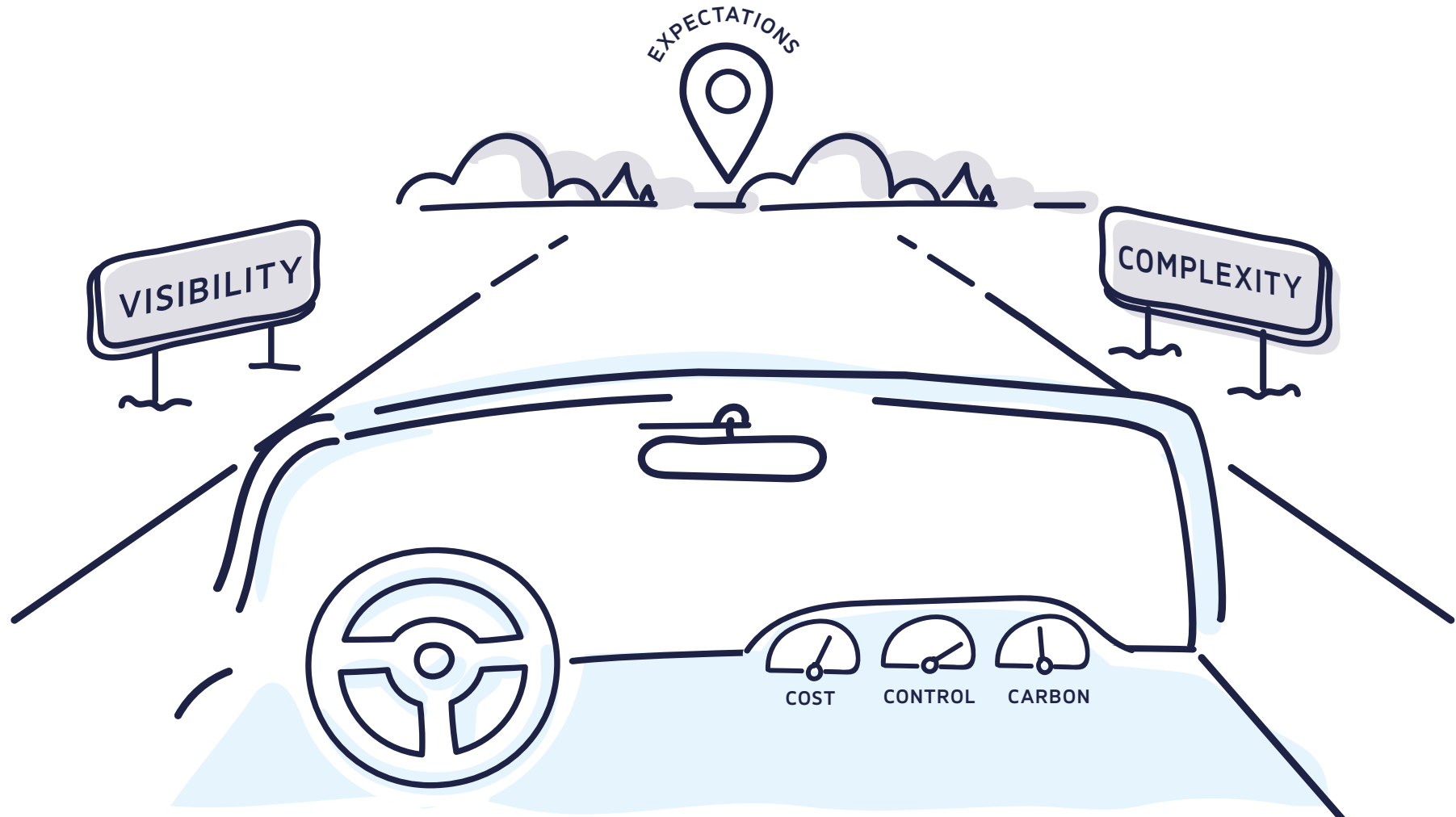
Success in navigating the road ahead means capitalising on the digital revolution. Blue Yonder has a strategy to help you get back in control.

How do you control what you can't see?

How do you plan for what you don't know?

How do you execute without alignment?

How do you make the unpredictable... more predictable?



The digital opportunity

Digital transformation enables your organisation to gain full visibility and control of your distribution capabilities. For the first time you will see the big picture and with the assistance of ML and AI be able to predict future states so that you can get ahead of your customers and suppliers to create profitable and personalised services while reducing cost and carbon.



Logistics Control

Visibility of all activities in and around the warehouse and the ability to simulate and orchestrate deliver optimal delivery performance, customer satisfaction and cost to serve.



Periodic to right-time

Real-time visibility and control enables resource optimisation and right-time shipping.



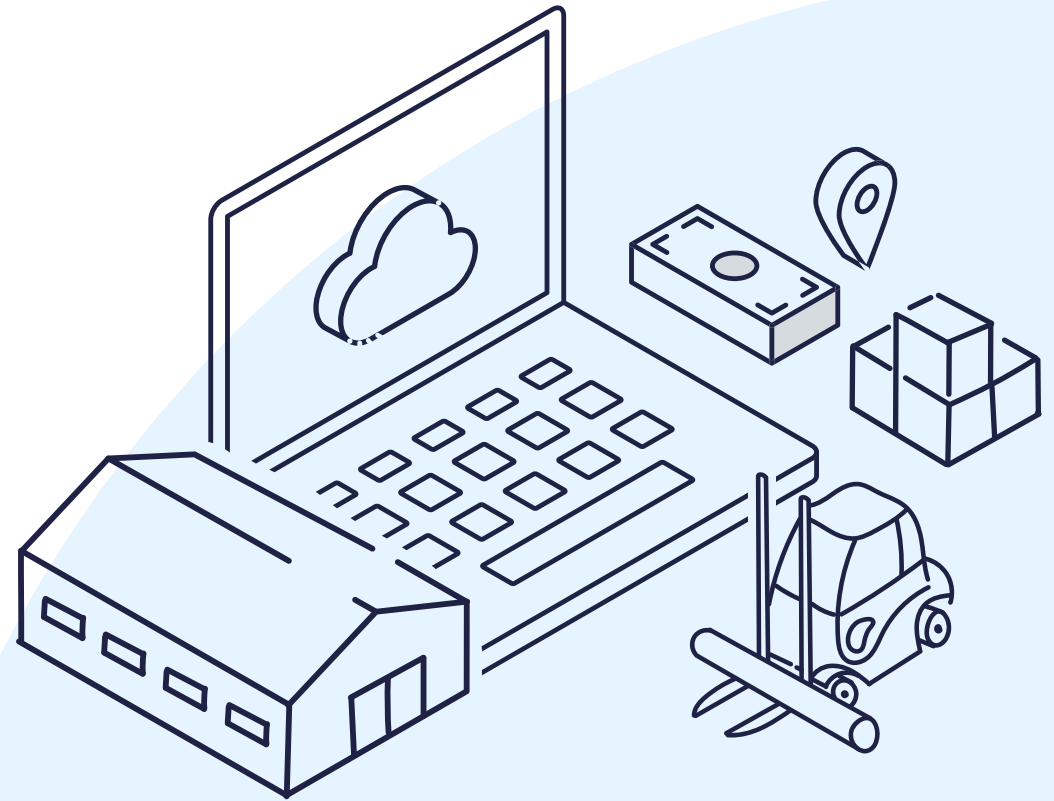
Uniform to personalisation-at-scale

Luminate warehouse tasking enables you continuously reprioritise warehouse tasks to meet your customers' delivery expectations.



Human to AI assisted

AI and ML predict issues that were previously unpredictable, prescribing optimum actions and enabling automation where possible.



Cost

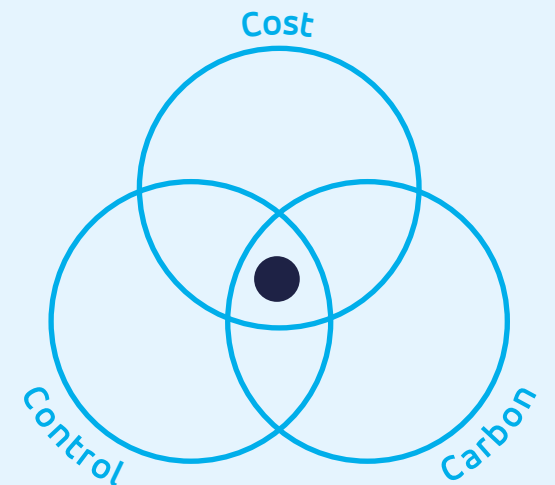
- Inventory accuracy up to 99.9%
- Decrease in emergency replenishments up to 25%
- Labour cost reduction up to 15%

Control

- 5%–18% productivity improvement
- 2%–15% reduction in internal management costs

Carbon

- DC energy consumption possibly reduced by 15%



Create your warehousing vision

Blue Yonder offers a unique Logistics strategy

Level 1 – The Warehouse Management System will uniquely extend this philosophy by fully planning, executing and synchronising all warehouse tasks to extend the parameters of service, efficiency and temporal advantage.

Level 2 – Intelligent Resource Orchestration capitalises on the digital revolution to fully automatically orchestrate all intra-warehouse resources to execute tasks in the most time – and cost effective manner, allowing for rapid on-boarding of human and robotics using various ways of data control and material handling devices to enable optimal operational flexibility and productivity.

Level 3 – The Logistics Control Tower will save as much as 8-10% of your distribution costs, and put you back in charge of your warehouse while making a big step forward to your sustainability goals. It will do so using a proven solution that scales to manage your warehouse as a vital element of the largest global supply chains.



Create your warehousing vision

Blue Yonder offers a unique Logistics strategy

Level 1 – Warehouse Management System

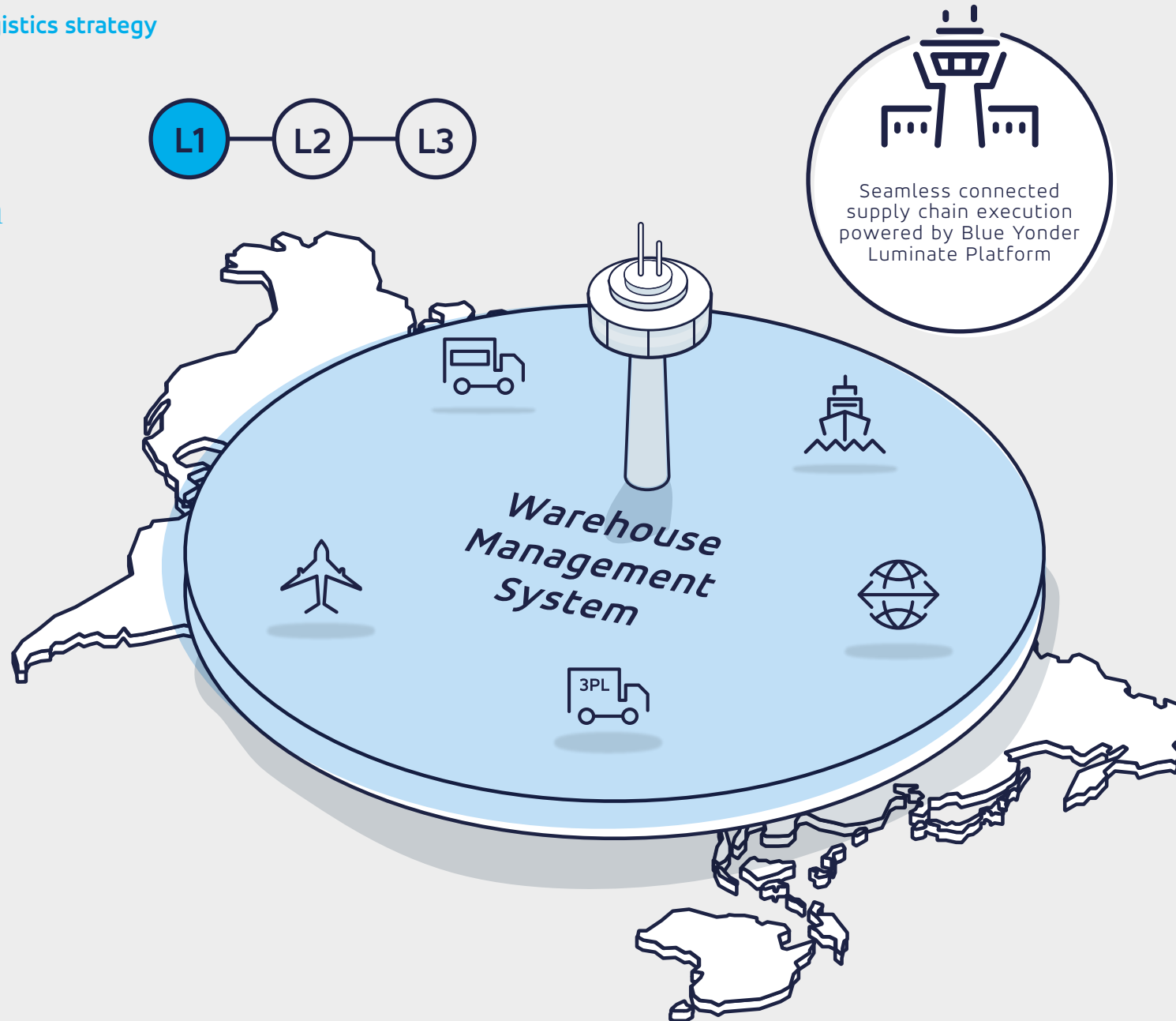
Synchronised logistics

Objectives

- Higher inventory accuracy
- New logistics services offering
- Additional intelligence for replenishment decisions
- Forward visibility for execution aware planning
- Visibility in to bottlenecks
- Intelligent resource orchestration

Capabilities

- Seamless synchronisation across transportation, warehouse and labour workflows
- Warehouse constraint aware transportation planning
- Advanced pallet building and container loading
- Resource visibility



Create your warehousing vision

Blue Yonder offers a unique Logistics strategy

Level 2 – Intelligent Resource Orchestration

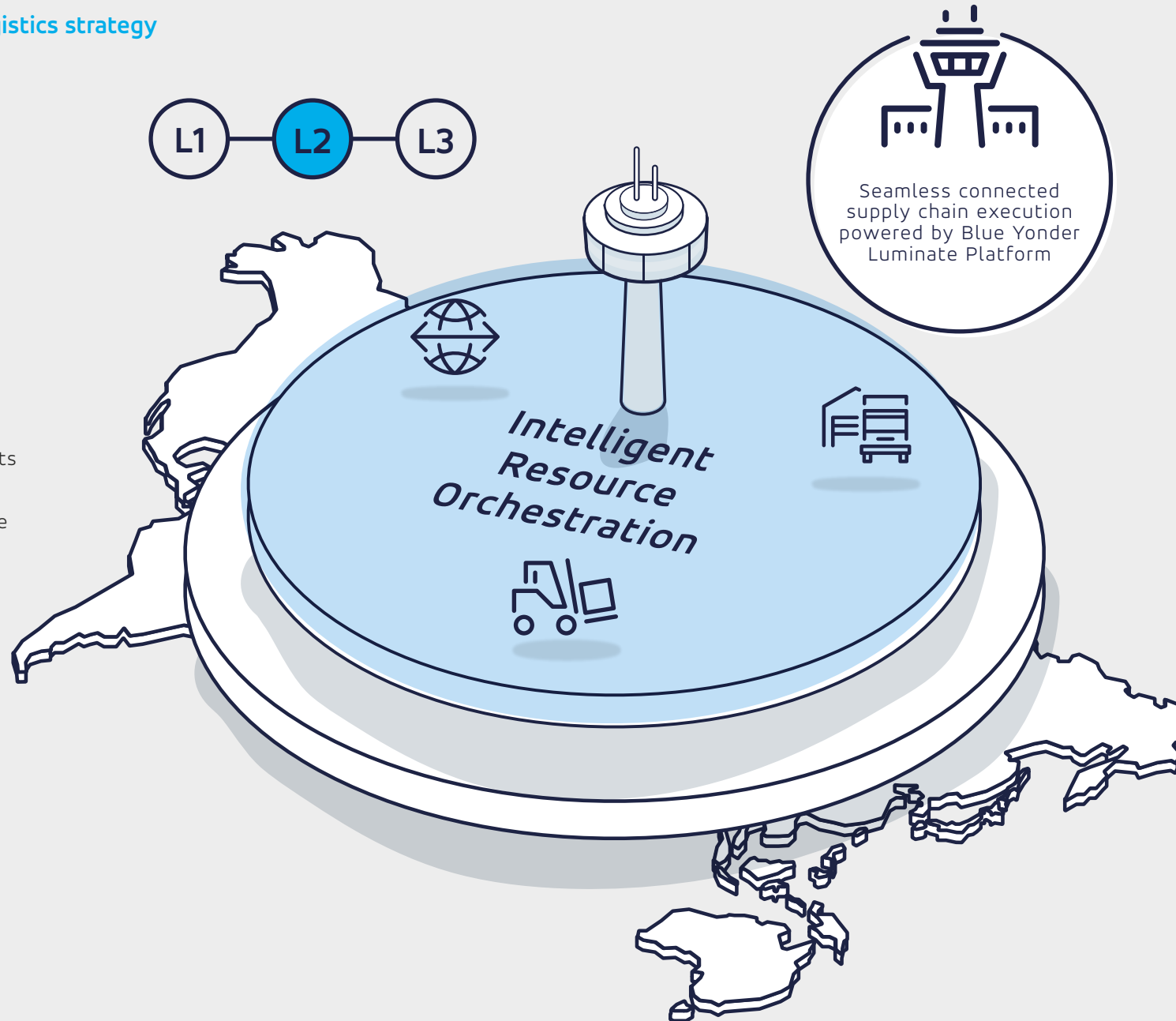
End-to-end-to-ecosystem
prediction and orchestration

Objectives

- Optimise resource management to improve service levels
- Decrease operational warehouse costs
- Manage intelligent use of various natures/kinds of DC resources include automation
- Efficiently and rapidly on-board automation concepts

Capabilities

- ML/AI self learns and prescribes and automates decision-making
- Cognitive segmentation delivers personalised service
- Collaborative AI-driven Supply resolution environment suggests outcome aware re-planning options



Create your warehousing vision

Blue Yonder offers a unique Logistics strategy

Level 3 – Logistics Control Tower

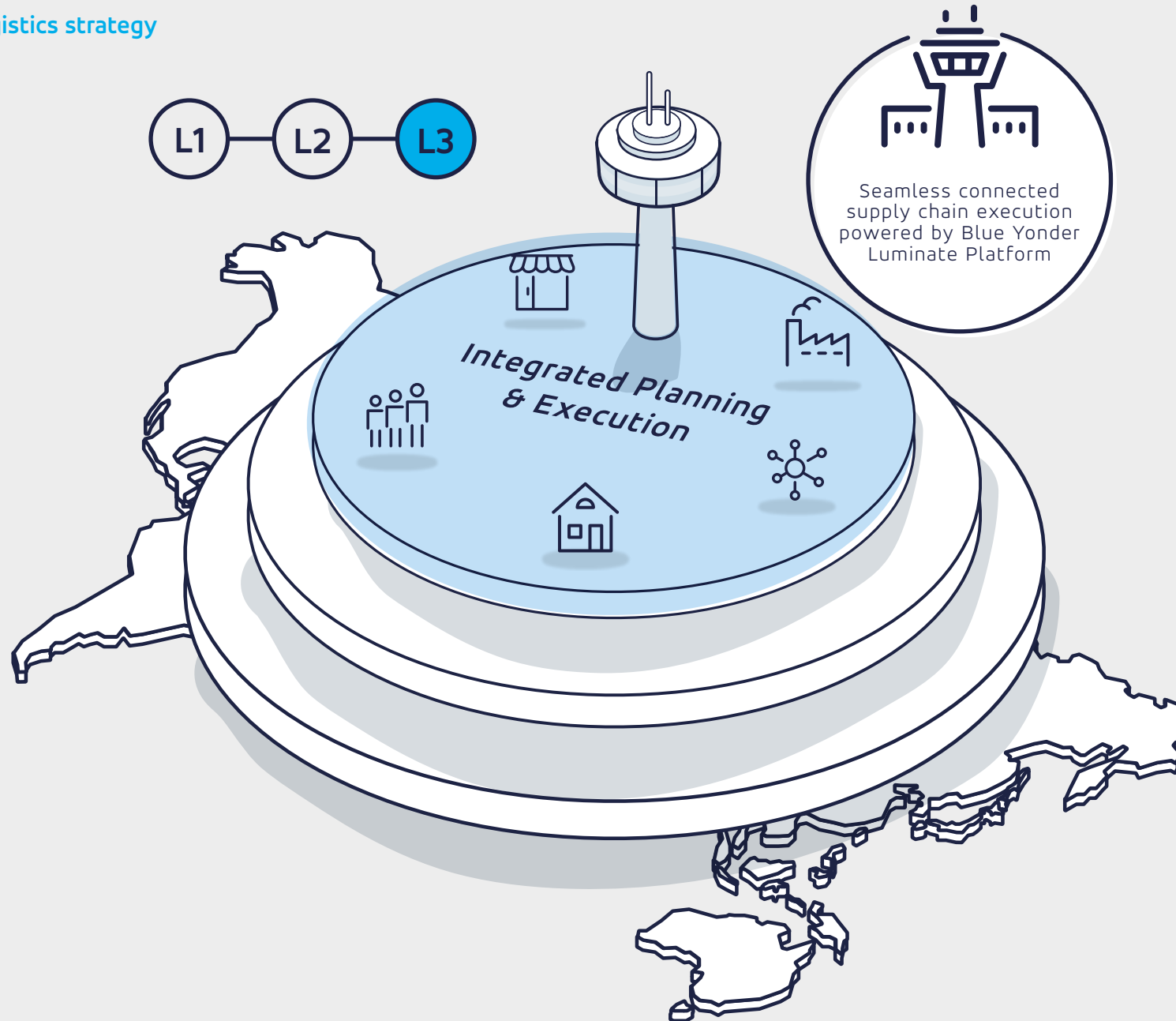
Total logistics control

Objectives

- Prediction of issues and opportunities ahead of time
- Continuous improvement via centralised Centre of Excellence
- Constraint aware optimisation
- End-to-end supply chain and inventory visibility
- Reduced carbon footprint

Capabilities

- SaaS enabled real-time end-to-end supply chain visibility
- Platform approach enables partner connectivity and independent data services
- Network design for strategic agility
- Inventory visibility and supply chain orchestration capabilities



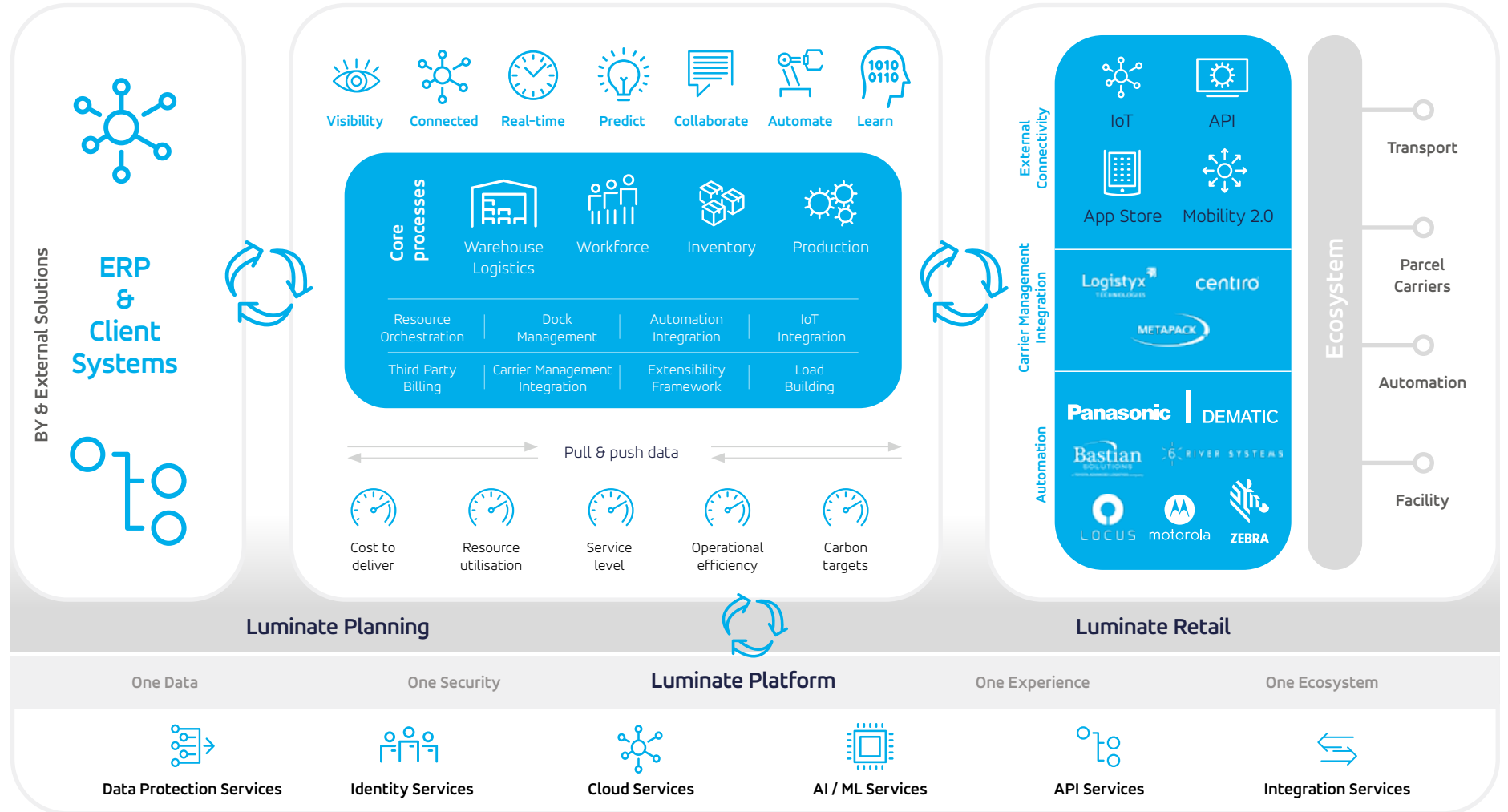
The Luminate Platform for the future of warehousing

Open platform

Blue Yonder's open platform approach enables total system orchestration.

Future ready

Ecosystem visibility, open connectivity and advanced analytics, ensures you are ready to capitalise on the next wave of collaborative services such as the 'Freight Marketplace, Supergrid Logistics and Uberised Workforce'.



The global leader

Trusted by over 1200 organisations



DHL Supply Chain launches software platform with Blue Yonder on Microsoft cloud to accelerate implementation of warehouse robotics through standardisation.

[Read more](#)



Global third party logistics provider (3PL), GEODIS, utilizes warehouse labor management (WLM) from Blue Yonder to help drive their business forward and stay efficient.



Blue Yonder's warehouse management capability helped enhance Kenco's replenishment processes by providing a new level of automation that resulted in increased productivity, improved customer service and support overall growth.



"The warehouse and store replenishment solutions have allowed Bon Preu to establish a very clear distribution policy that has streamlined some of our purchasing processes, while achieving optimal inventory levels in our warehouses."

Chief Operations Officer, Bon Preu



Americold has modernized its legacy warehouse environment through real-time visibility into delivery, labor management and operations to satisfy escalating customer expectations, save valuable resources and reduce overhead.



SodaStream leveraged Blue Yonder's warehouse mobility technology to become more efficient with order fulfillment and inventory management, reducing inventory value from \$120 million to \$90 million.

[Read more](#)



Gartner has named Blue Yonder a 'Leader' in all four supply chain Magic Quadrants:

- Warehouse Management Systems
- Transportation Management Systems
- Sales & Operations Planning
- Supply Chain Planning and Performance

With leading solutions for logistics, warehouse, transportation, and integrated planning and execution, Blue Yonder is uniquely positioned to provide end-to-end visibility across the supply chain.

Click below to see the Gartner Magic Quadrant for Warehouse Management Systems (WMS).

[Learn more](#)





Get in touch today to create your logistics vision and transform your warehouse capabilities.
Visit blueyonder.com/future-of-warehousing to find out more.